

LOCAL SCHOOL COUNCILS 101

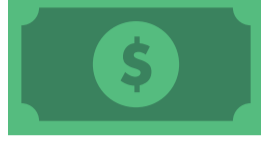
Everything you need to vote in Chicago's 2018 LSC election on April 18th and 19th

What is a Local School Council (LSC)?

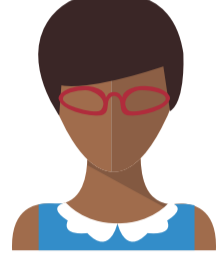
1 Local School Councils (LSCs) are school-based management teams that make important decisions on the budget and running of each school in Chicago Public Schools (CPS). While most LSCs are elected, some are appointed and have more limited powers. **They are comprised of 6 parents, 2 community members, 2 teachers, 1 non-teacher staff, and 1 non-voting student adviser (in high schools only).** They are responsible for three main things:



Developing and monitoring the School Improvement Plan



Approving how school funds and resources are allocated



Evaluating and selecting the school principal

Your vote can make a big difference.

Did you know? LSC elections are the only school elections for CPS. Because they are based on school zones, they are the most hyperlocal elections in the whole city!

2 Where and when are elections?

<https://tinyurl.com/ChiLSC2018>



Enter your address to find schools where you are eligible to vote and view the candidates running.

You must vote **in person** at the school holding the LSC election:



Elementary Schools
6am - 7pm



High Schools
6am - 7pm



Parents and community members will have the opportunity to run and vote for up to 5 candidates for 8 positions on the school's LSC (6 parent members and 2 community members) for the new two-year term of office beginning July 1, 2018.



School staff members will take a poll on election day. They have the opportunity to run and vote for up to 2 candidates for 3 positions on the LSC (2 teacher members and 1 non-teacher member) for the new term of office.



Students will take a poll on different day to select a student representative to advise the LSC.

3 What do you need to vote?

ELIGIBLE VOTERS

- Parents of students enrolled in the school
- Legal guardians
- Temporary custodians

Any resident 18 years or older living within the school's attendance zone or voting district

WHAT TO BRING

- Current ID
- Verification by the school or a document showing that you are the parent or guardian of student(s) enrolled in the school

- Current ID
- Document establishing your address



You must vote in person. There is no absentee voting or designating a substitute or proxy.



In the event that a person with a disability who is eligible to vote cannot enter a school, election judges must provide a ballot at curbside.



Eligible voters will get one ballot and can vote for up to five candidates. You can cast one ballot for each school where you are eligible to vote.

CHICAGO
LAWYERS'
COMMITTEE
for Civil Rights

Questions or concerns about an election near you? Call Chicago Lawyers' Committee at (312) 888-4193.